

Supply Chain Communication Tool

Interface constraints

1st May 2009

Introduction



- Within the Supply Chain Communication tool, the IT developer has to build an interface between Supplier and Customer.
- The tool interface allow exchange of information.
- Constraints for tool interface have to be setup to ensure efficient and proper exchange.
- The tool will be required until after the 2018 registration window
- The basis for the tool is the Exposure Scenario Development and Communication Model developed by the Cefic Supply Chain Communication Task Force. Specifically, the tool supports the communication component of the Model. See slide 3 - Shaded green section.

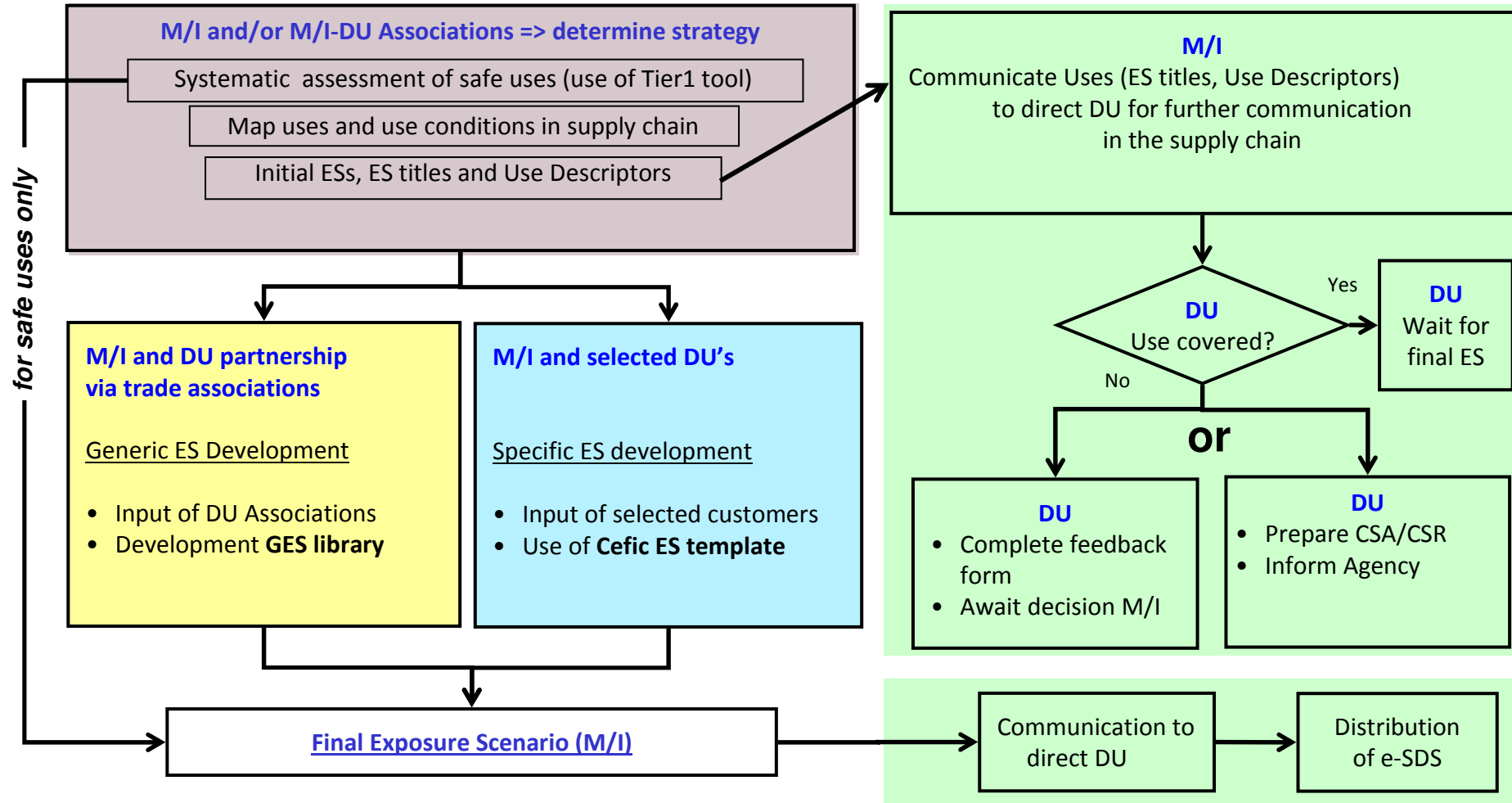
Reminder from IT requirements document – the phased communication:

- ✓ *In Phase 1, the tool will provide functionality to download the information provided by Suppliers.*
- ✓ *The tool will have the option to provide an extract in XML format.*



Downstream Users of Chemicals Co-ordination group

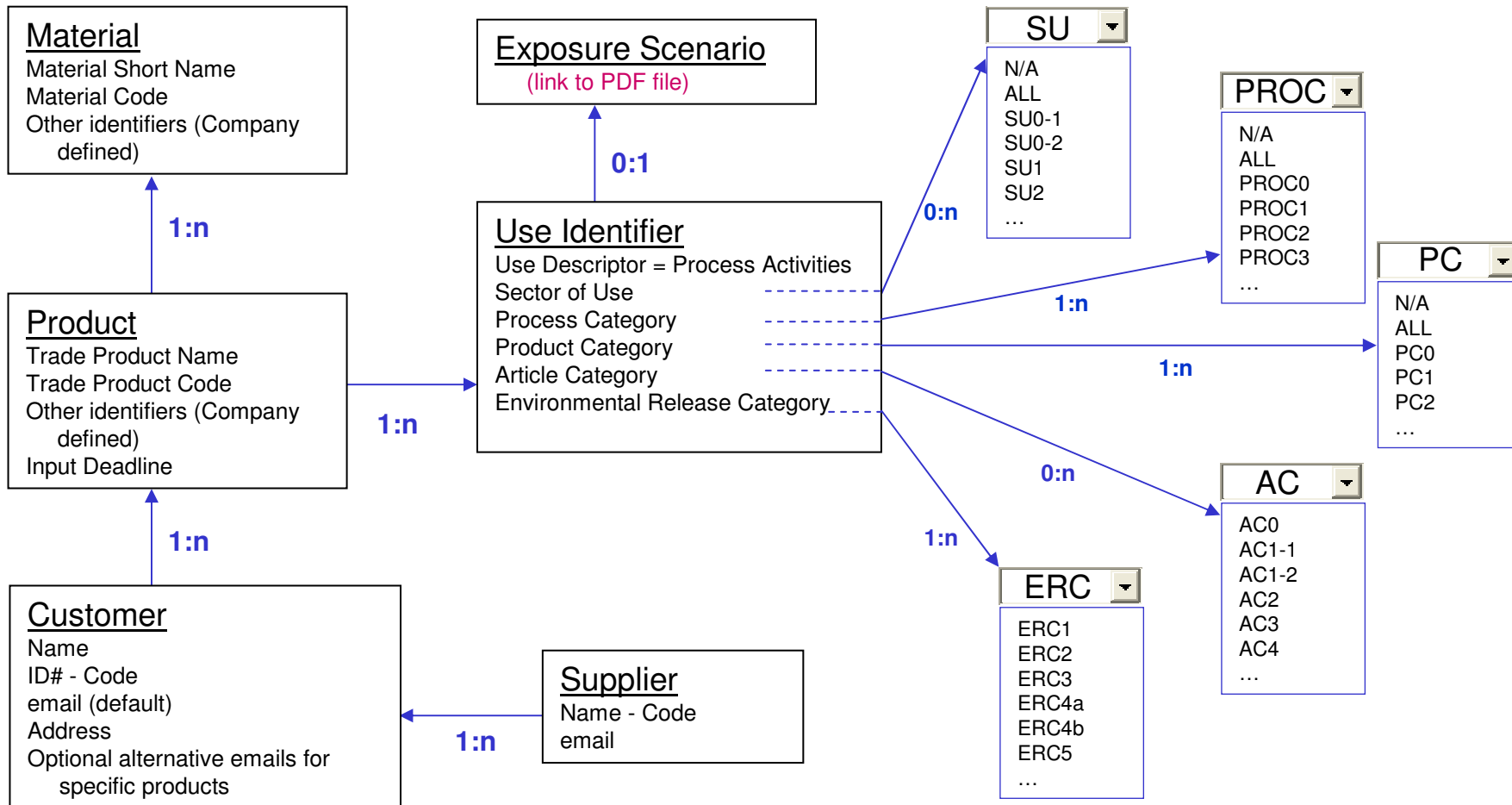
ES Development & Communication model



Legend
 M/I = Manufacturer / Importer
 DU = Downstream User

For specific products and applications the appropriate (next) steps in the above diagram need to be determined based on expert judgement: not always all steps are needed and/or the order can be adapted.

Data Hierarchy



Data for Upload and Download



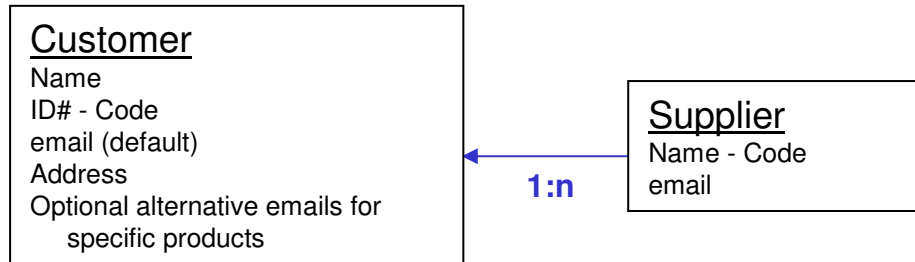
Fields (for Download)

1. Supplier Code
2. Supplier Name
3. Customer Code (mandatory)
4. Trade product code (mandatory)
5. Trade Product name
6. Material Code(s) mandatory (multiple possible)
7. Material Name (one per Material Code)
8. Input Deadline
9. Use Identifiers (mandatory)

Fields (for Upload)

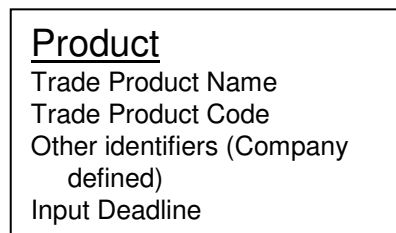
1. Customer Code
2. Trade Product Code
3. Material Code
4. Use Identifiers

Supplier → Customer

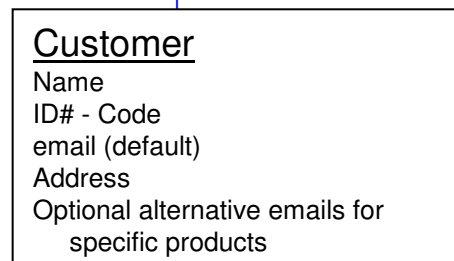


- The Supplier database contains all supplier's customers.
- The tool interface is designed for one customer at a time.
- The xml file is downloaded by customer: it contains supplier name and code.
- The (supplier's) customer code is mandatory to reconcile information at the supplier level.

Customer → Product

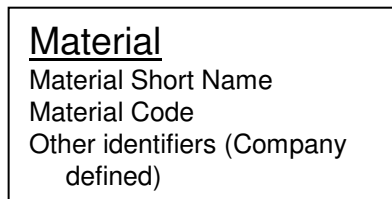


1:n

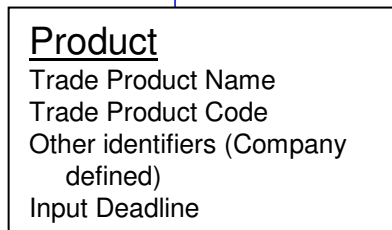


- The interface contains the list of products purchased by the Customer. The list will be exhaustive.
- Customer will see only the products he purchases.
- Customers will see all products he purchases, regardless of the feedback deadline or the need for an ES.
- The product is identified by trade name & code.
- Suppliers will determine the feedback deadline for a product based on the registration requirements for the constituent substances. The deadline is defined on product level.

Product → Material

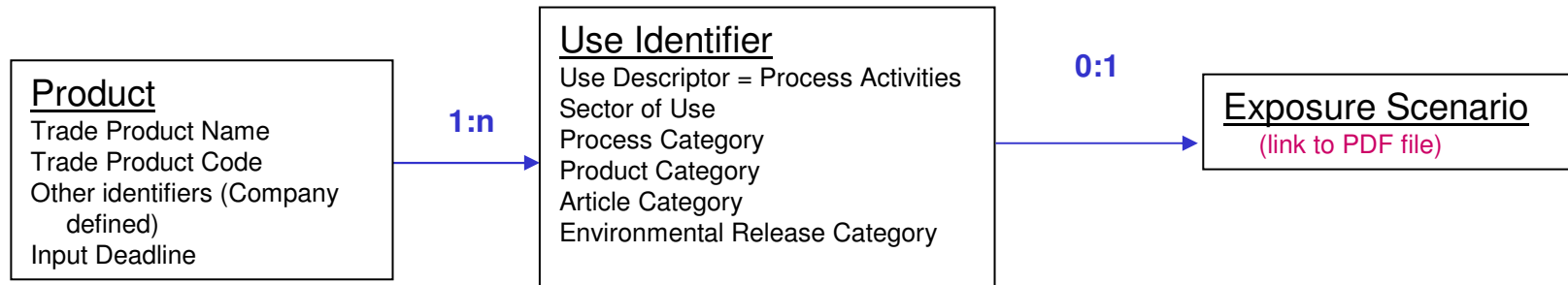


1:n



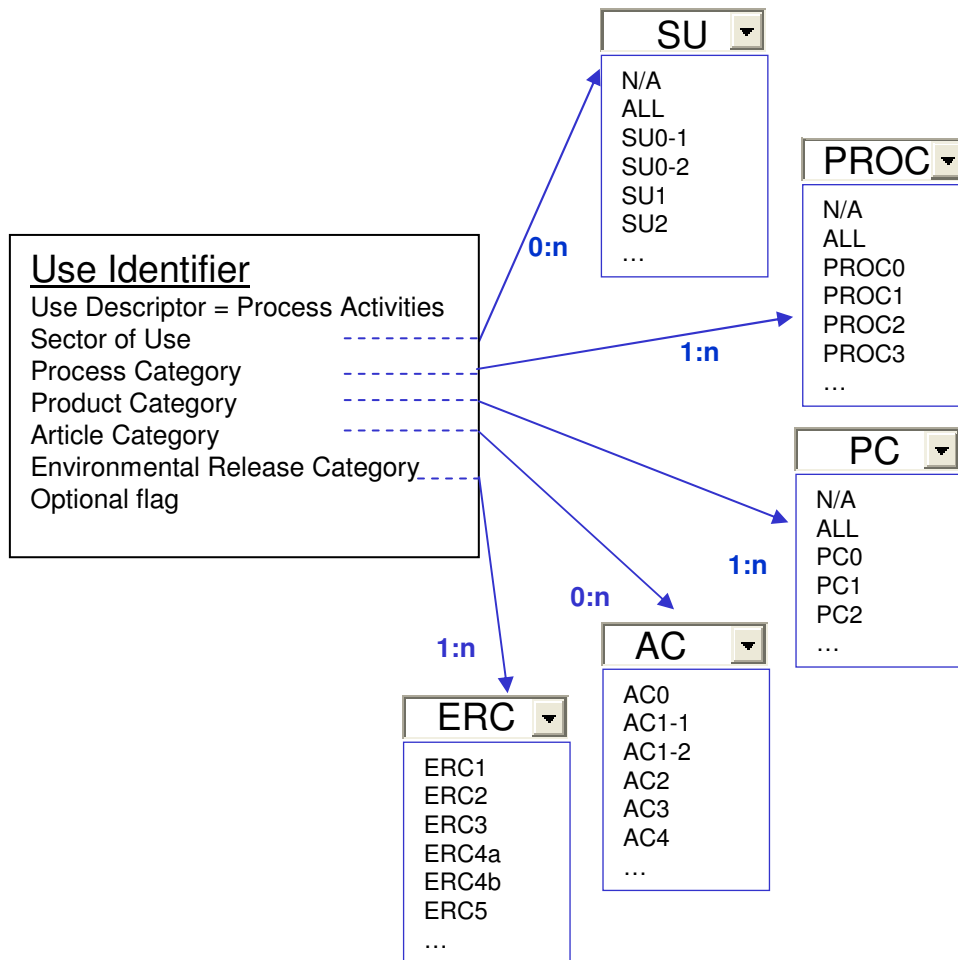
- Customers are responsible for mapping supplier trade and material codes to their internal naming/coding system.
- If needed, the supplier can define one or more materials linked with the product.
- Material can be identified by name and code.

Product → Use Identifier



- Phase 1: Suppliers will advise Customers of the Uses to be included in the registration dossier. Customers can advise Suppliers if their particular Use is not covered
- The Uses are listed on the product level.
- For each Product, Suppliers will make available the following Use Identifier information:
 - ✓ Use Description
 - ✓ Sector of Use
 - ✓ Process Category
 - ✓ Product Category
 - ✓ Article Category
 - ✓ Environmental Release Category
- On phase 2, the supplier will make available a/ PDF file containing the Exposure Scenario.

Use identifier → Standard Libraries



- The Uses are listed on the product level.
- Suppliers will undertake a process to assign Use Descriptors to their products
- The Standard Use Descriptors (sector of uses, process & product & article & Env. release categories) are selected from the Standard Libraries.
- Article Category & Sector of Use are not mandatory