



ESCom Project

The new catalogue of ES standard phrases

7th Meeting of the Exchange Network on Exposure Scenarios (ENES7)
Brussels, 18-19 November 2014

Dook Noij, Dow Benelux

(on behalf of the ESCom Standard Phrases Working Group)

Main ESCom Phrases WG activities in 2nd half of 2014

- **Mapping of phrases to XML**
 - Link of phrases to specific field(s) of the XML
 - Analysis of XML Schema structure
- **Improvement of Phrases**
 - Review of rules for the building of phrases
 - Clean-up of sector group phrases
 - Improvement of assessment tool phrases
- **Communication with users**
 - Update of phrase guidance
 - Processing new phrase submissions
 - Cefic ESCom webpage



Mapping of catalogue phrases to XML: why?

ESCom ES standard phrase catalogue
and ESCom XML constitute ONE package
and have to fit together perfectly



To ensure that catalogue and XML can work together:

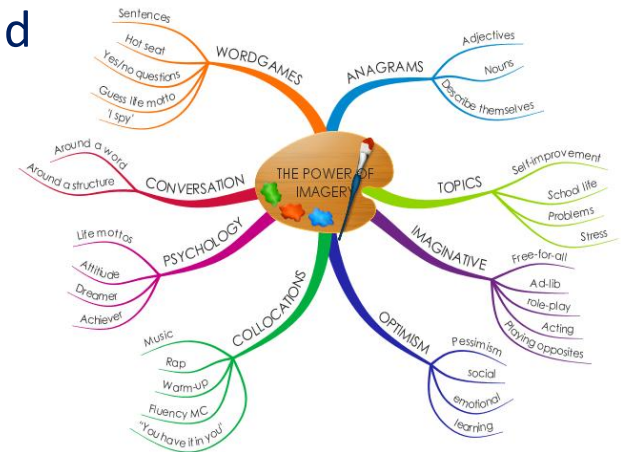
- The meaning and intent of each phrase in the catalogue as well as where it fits in the structure of the XML needs to be clear (link to the appropriate XML attributes ('data fields') by means of metadata)
- Each XML attribute has to be appropriate, e.g. designed to transport phrases with a certain format and meaning (assigned to this attribute by means of metadata)



Mapping of catalogue phrases to XML: how?

Methodology

- Identify and define all XML attributes that should be associated with the phrases in the catalogue
- Identification of consistency rules for catalogue metadata and XML attributes
- Identify suitable phrases in the catalogue for each XML attribute and link phrase and attribute through new metadata
- Check the presence of 'orphan' attributes, e.g. attributes for which no suitable phrases are available or where there is no consistency between phrases and data type in the XML
- Case by case proposals for solutions in case of issues



Mapping of catalogue phrases to XML: results

- Mapping was performed for exposure scenario section 2 phrases (section 1, 3 and 4 phrases to follow)
- Link to appropriate XML attribute via new catalogue metadata proposed for all phrases
- New general criteria and new phrase rules developed to apply in the review of phrases and the metadata assignment
- Suggestions made for phrase deletion and changes in the catalogue to adhere to the general criteria and phrase rules
- Discussions with sector organizations to agree on proposed changes and deletions of sector specific phrases (ongoing)
- Agreement with ESCom IT group on proposals for changes in the XML structure (October 24th 2014)

Mapping of catalogue phrases to XML: next steps

- Execute the mapping for the exposure scenario sections 1, 3 and 4
- Review of the mapping when updated XML becomes available
- Finalize the discussions with sector groups on deletion and modification of phrases
- Include phrase sets for assessment tool phrases (e.g. ART, Stoffenmanager, EMKG, etc.)
- Finalize ESCom catalogue version 2.0 and publish in spring 2015



Update of the phrase guidance: rationale

- The ESCom package is aimed at efficient and effective electronic communication of ES information between M/I, Formulators and DU's
- This requires an XML that is tailored to communicate the relevant ES data elements (refer to the ECHA ES template) and ES phrases that:
 - Are fitted to the XML (appropriate assignments to a defined set of XML attributes)
 - Convey meaningful, consistent and concise information to the receiver
- It was concluded that this can only be achieved by developing a relatively limited set of high-quality phrases, meeting strict criteria
- As a consequence:
 - A significant part of the phrases in the catalogue has to be inactivated or modified
 - New phrase proposals will be thoroughly reviewed against the rules in the updated phrase

Examples of additional rules in the phrase guidance

- Phrases should be as generic as possible; avoid a phrase like: *‘Coating agents for fertilizers’*
- Phrases should contain the presence (not the absence of a condition); avoid a phrase like: *‘Hand protection not applicable’*
- OC/RMM type phrases have to be directly linked to the exposure assessment in the CSR (quantitatively or qualitatively); phrases that do not meet this condition are Additional Good Practice Phrases (AGPA). AGPA phrases have to be very generic to be included in the catalogue
- RMM/PPE type phrases should not contain information on the efficiency; this should be specified in a separate phrase; avoid a phrase like: *‘Wear a respirator providing a minimum efficiency of’*



Submitting phrase proposals

- New phrase proposals can be submitted (one by one) through the phrase proposal tool:

<http://content.euphrac.eu/Default.aspx?Language=en>

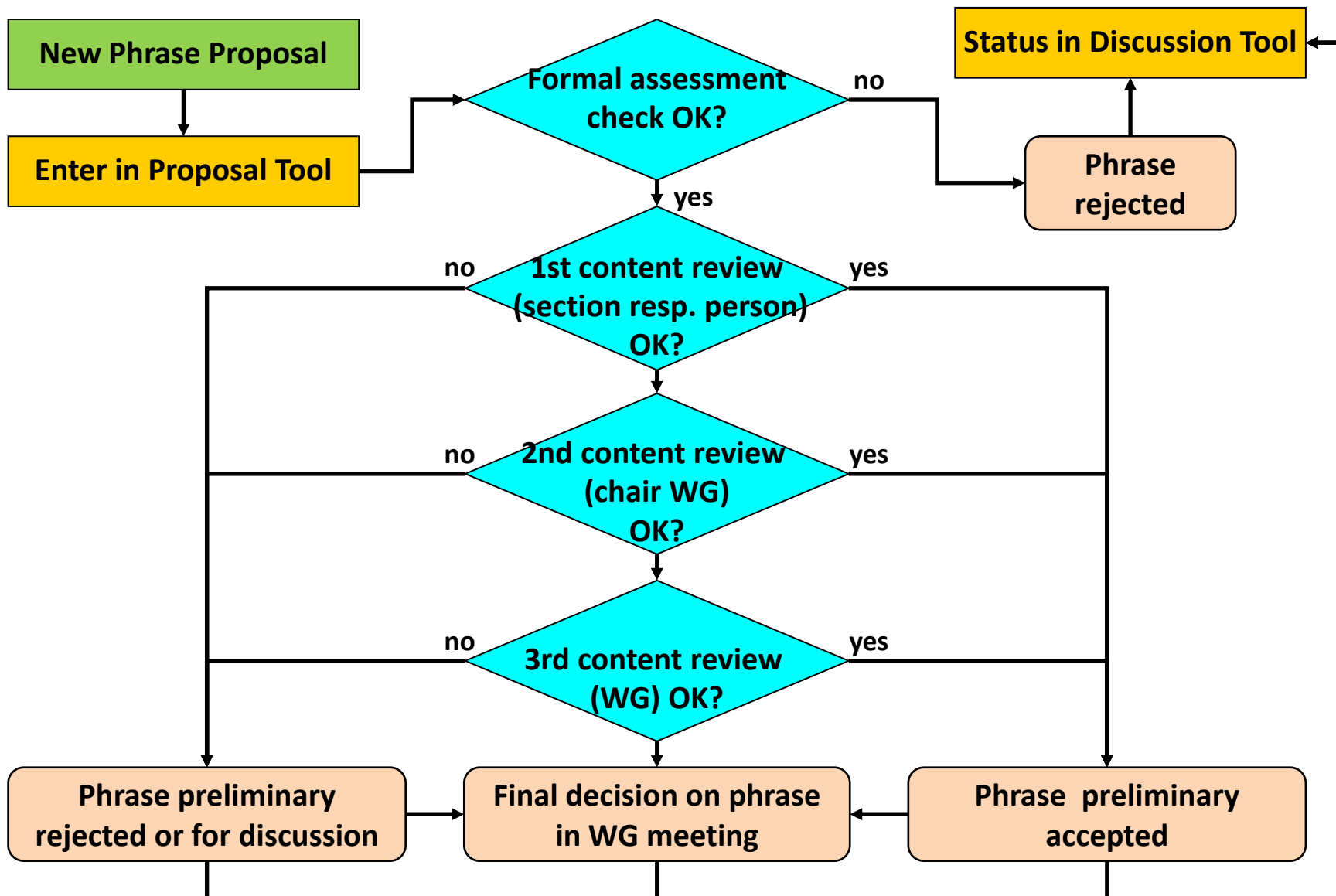
- Familiarize yourself with the phrase guidance before submitting a phrase; the phrase guidance can be downloaded from:

<http://www.cefic.org/Industry-support/Implementing-reach/escom>

- ESCom welcomes your proposals but note that proposed phrases will be thoroughly reviewed against the phrase rules and on the added value delivered



The phrase proposal process



Cefic ESCom Project webpage created

Home > Industry Support > Implementing REACH > ESCom Project

Industry Support ▾

Grant-it

Responsible Care for SMEs

▼ Implementing REACH

ESCom Project

Guidance and Tools

REACH Information and Experience Exchange Forum (RIEF)

Transport & Logistics

Key process for the successful implementation of REACH

The ESCom Project - What is it all about?

The ESCom standard for the exchange of Exposure Scenario (ES) data between IT systems, key process for the successful implementation of REACH, has been developed to enable consistent and harmonised communication of ES information throughout the supply chain.

It is aimed at providing standard phrases on the safe use of chemicals in the extended safety data sheet. This is one of the activities taking place in the context of the CSR/ES Roadmap, particularly Action area 3.

The standard consists of two components (further developed below):

1. **"ESCom Phrase Catalogue"**, covering the standard phrases for Exposure Scenario content, is being maintained and further developed under the leadership of Cefic and DUEG with aim of developing standard phrases to be applied for Exposure Scenarios.
 - » **Download the Phrase Guidance on creation, submission, usage of EuPhraC and ESCom phrases**
 - » **Download the ESCom Phrase Catalogue V1.4**

twitter Follow us

▲

"Tracking Industry's #Performance"
#EUChemIndustry #SustainabilityReport
2014 <http://t.co/qEwM7peYHP>
<http://t.co/NSA6DJJzfm>

yesterday from [Cefic](#)

▼

Contact

Members of the ESCom Phrases Workgroup

» Go to eSDCom site

Downloads (phrase catalogue, phrase guidance, XML)

Link to eSDCom site (phrase proposal and discussion tool)

Thank You!

Let's eat grandpa.

Let's eat, grandpa.

**correct punctuation can
save a person`s life.**